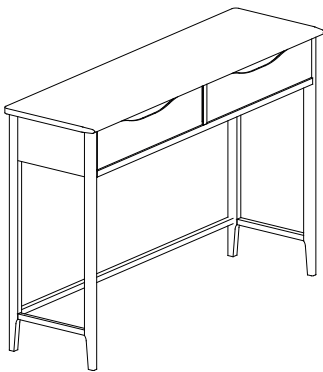


SAFETY ANCHOR ASSEMBLY INSTRUCTIONS

European Collection Adana Timber Furniture Console Table




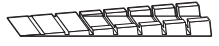


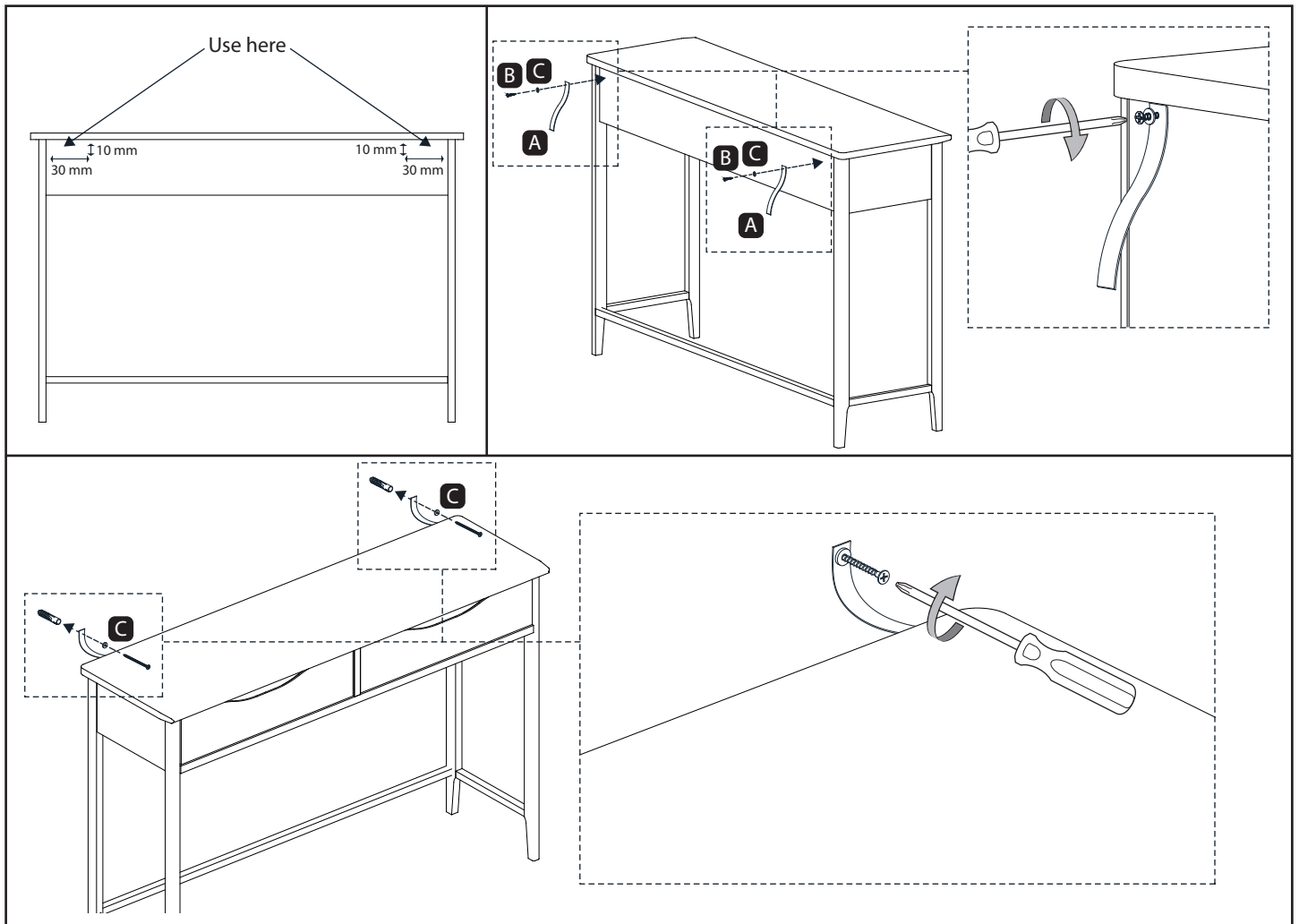
Fix the textile straps (A) using the screws (B) and washers (C) to the back of the product as shown below.

Place your product in the final position. Mark the wall with a pencil where the hole will be drilled. Check for hidden gas and water pipes and/or electrical wiring. Drill holes and fit an appropriate wall plug (not supplied) for your wall type. Screw the straps (A) to the wall.

Choose an appropriate screw to secure. If in any doubt please consult a professional.

HARDWARE LIST

A		2 pcs
B	 M3,5 x 16mm	2 pcs
C		4 pcs
D		1 pc



Wedge Instructions

If the table is not level on your floor use the wedge (D) provided, and snap it off so that it does not protrude out from the cabinet's leg, you can also snap it lengthways if desired.

